

SYDNEY CIDERY EVENT KIT



MEMORABLE EVENTS WITH CITY CONVENIENCE

Nested within Rydges World Square - Sydney Cidery is a contemporary craft bar serving crisp ciders, handcrafted beers and cheerful food - perfect for creating memorable moments with a city vibe.

Born from the passion of hotel owner Dr. Jerry Schwartz, Sydney Cidery's roots trace back to Sydney Brewery, which began as a boutique brewery in the Macquarie Hotel basement. We now brew our award-winning ciders and beers locally in the Hunter Valley

The space features an urban-industrial design with oak and copper tones, herringbone floors, and a bar made from recycled brass and timber. Inside, tall tables, leather chairs, and industrial lighting create a warm, relaxed vibe. Outside, our enclosed terrace overlooks World Square and offers high tables, bar stools, and heaters.

CHEERS TO OUR POINT OF DIFFERENCE

- Convenient- close to Town Hall, Museum and Gadigal stations
- Flexible Options - Reserve a table, a section, or the entire bar
- Various Packages - Excellent food & drink selections
- Distinctive Atmosphere - Stylishly alternative venue option
- Expert Team - Dedicated event team for seamless delivery





ONE SPACE, MULTIPLE OPTIONS

Sydney Cidery is ideal for exclusive cocktail style events – whether it's a milestone celebration or a company gathering.

We can host up to 300 guests for fully exclusive use or offer semi-exclusive options, with 90 on the terrace & 150 indoors.

The venue offers flexible spaces that can be reserved for groups of any size, with partial hire options available. Minimum spend may apply based on the area and time of booking.

- Exclusive hire – up to 300 guests
- Half room hire – 150 guests
- Terrace – up to 90 guests

VIRTUAL TOUR

A collage of various food items including sushi, pizza, spring rolls, fruit, and pastries. The text "FOOD SELECTION" is overlaid in the center.

FOOD SELECTION

SHARE PLATTERS

Shared platters are ready on arrival, creating a social vibe ready to spark conversation, offer variety, and set the perfect tone for a relaxed, memorable event!

NIBBLE & NOSH PACKAGE | \$29 PP

- Rice paper rolls with vegetables & vermicelli (V, GF, VG)
- Rockmelon & Jamon
- Satay chicken skewers with peanut sauce
- Arancini pumpkin with rocket & aioli
- Empanada vegetarian (VG)
- Gourmet Pizza

GATHER & GRAZE PACKAGE | \$39 PP

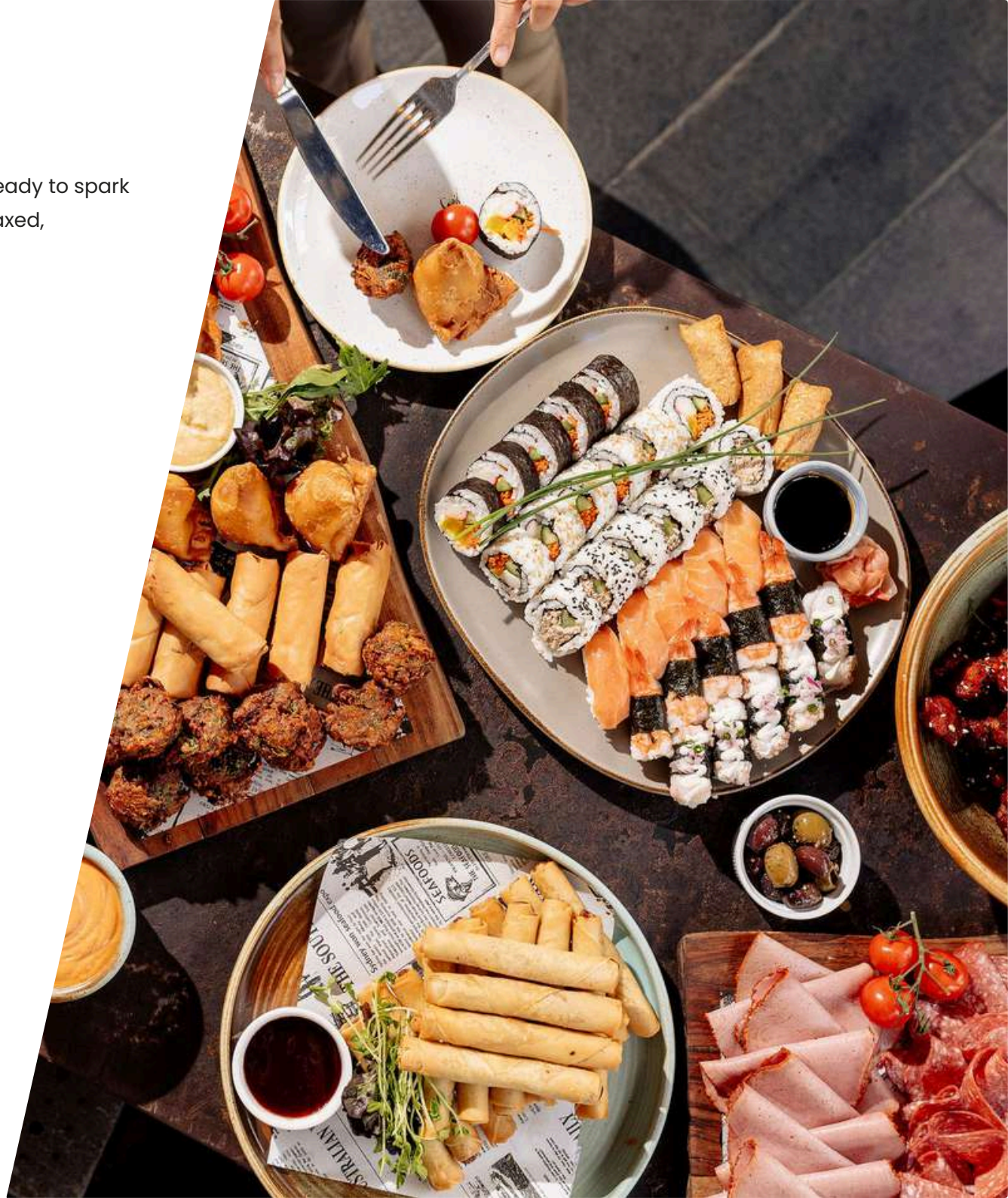
Nibble & Nosh inclusions plus:

- Antipasto platter
- Roast Peking duck pancakes

THE GRAND SPREAD PACKAGE | \$49 PP

Nibble & Nosh inclusions plus:

- Antipasto platter
- Roast Peking duck pancakes
- Kataifi prawns with Chimichurri
- Assorted sushi



CANAPÉS

Canapé packages provide a warm and impressive start to any event. Served by roaming staff, canapés allow guests to mingle while enjoying a tailored selection to suit all tastes and dietary requirements. Mix and match your favourite items to create the perfect menu.

SAMPLE CANAPÉ MENU HIGHLIGHTS:

Cold – Smoked salmon pinwheel, fresh oysters, BBQ pork rice paper rolls

Hot – Arancini bolognese, tandoori chicken skewers, sticky pork belly bites

Substantial – Korean fried chicken bao buns, cheeseburgers, beef burgundy pies

Sweet – Mini lamingtons, macarons, dessert pops

\$18 PP

Choose 2 canapés

\$35 PP

Choose 1 cold, 2 hot & 1 sweet canapé

\$48 PP

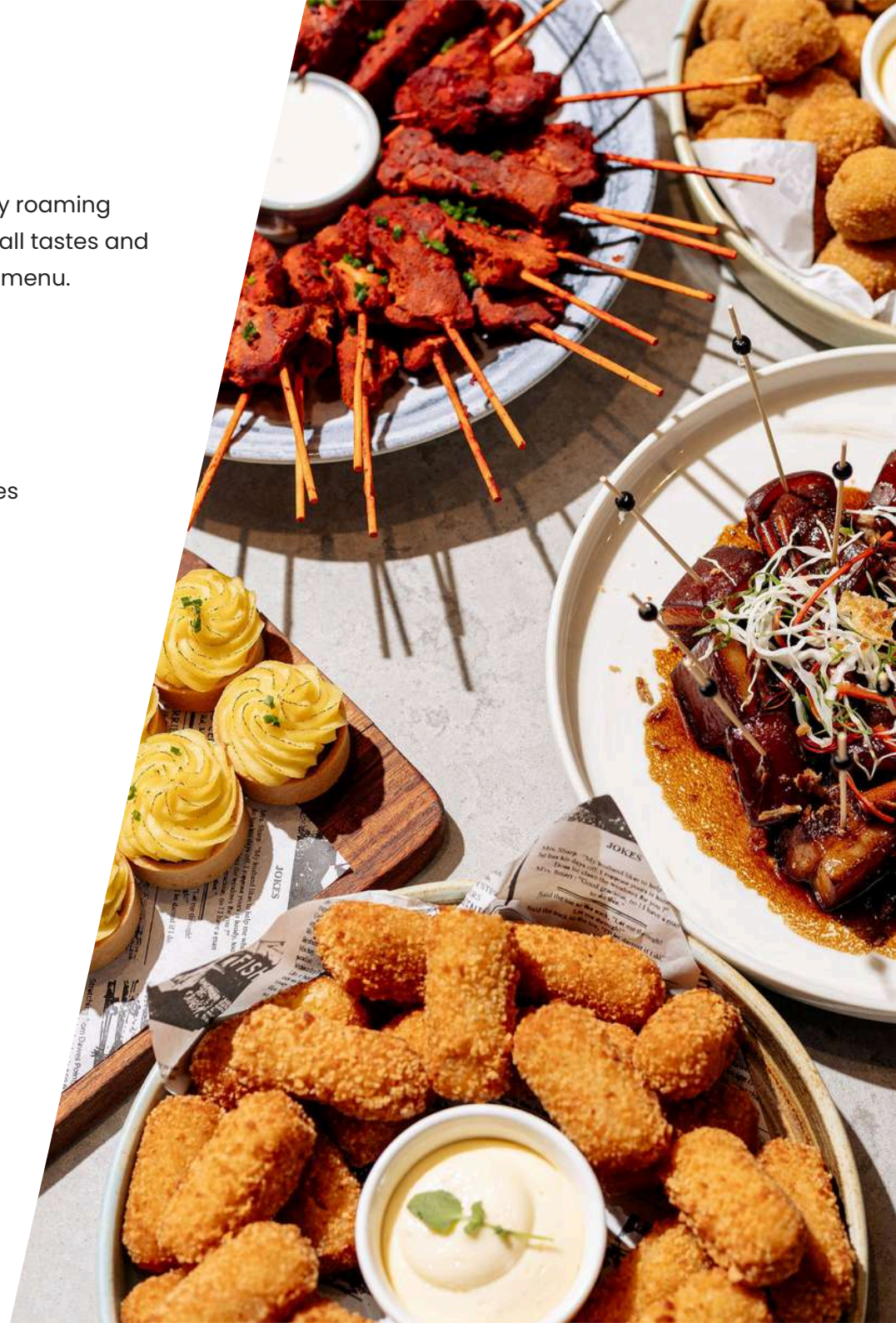
Choose 2 cold, 2 hot, 1 substantial & 1 sweet canapé

\$60 PP

Choose 3 cold, 3 hot, 1 substantial & 1 sweet canapé

\$72 PP

Choose 3 cold, 3 hot, 2 substantial & 2 sweet canapés





BEVERAGES

BEVERAGE PACKAGES

Drink packages simplify planning and ensure guests enjoy uninterrupted hospitality throughout the event. All packages begin with a welcome drink on arrival.

GOLD PACKAGE

1 Hour - \$32 PP
2 Hour - \$40 PP
3 Hour - \$48 PP
4 Hour - \$56 PP

SPARKLING

NV ZILZIE BTW SPARKLING Murray Darling

WHITE

NV2022 ZILZIE BTW SB Murray Darling

RED

2022 ZILZIE BTW SHIRAZ Murray Darling

SYDNEY BREWERY BEER

Lager | Pale ale

ASSORTED SOFT DRINKS

SOFT DRINK PACKAGE

1 Hour - \$15 PP
2 Hour - \$20 PP
3 Hour - \$25 PP
4 Hour - \$30 PP

PLATINUM PACKAGE

1 Hour - \$40 PP
2 Hour - \$50 PP
3 Hour - \$58 PP
4 Hour - \$64 PP

SPARKLING

Choose one option

NV DAL ZOTTO PROSECCO, King Valley, VIC

NV MUMM MARLBOROUGH SPARKLING, NZ

WHITE

Choose two options

LANEWAY CHARDONNAY, SA

CASA LUNARDI PINOT GRIGIO delle venezie, Italy

YEALANDS PETAL & STEM SAUVIGNON BLANC, NZ

SONS OF EDEN FREYA RIESLING, SA

FIORE MOSCATO

CIDERS - (upgrade options)

Sydney Cidery The Original

Agave & Ginger

Seasonal favourites from our brew-master

RED

Choose two options

WOODSTOCK DEEP SANDS SHIRAZ, McLaren Vale

OAKRIDGE PINOT NOIR, VIC

RYMILL THE YEARLING CABERNET SAUVIGNON, SA

IRVINE SPRINGHILL MERLOT, SA

CASTELLO DI CORBARA CAMPO DELLA FIERA

SANGIOVESE, Umbria, Italy

SYDNEY BREWERY BEER

Lager | Pale ale | Cascade light beer

ASSORTED SOFT DRINKS

Minimum 15 Guests Required*



CONTACT OUR EVENTS TEAM TODAY

Functions_RydgcsWorldSquare@evt.com

+61 2 8268 1670